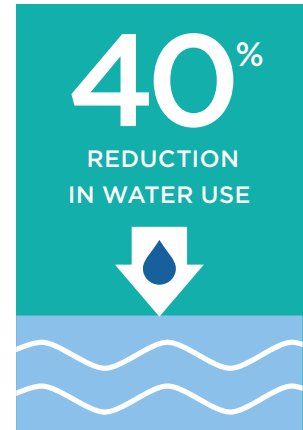
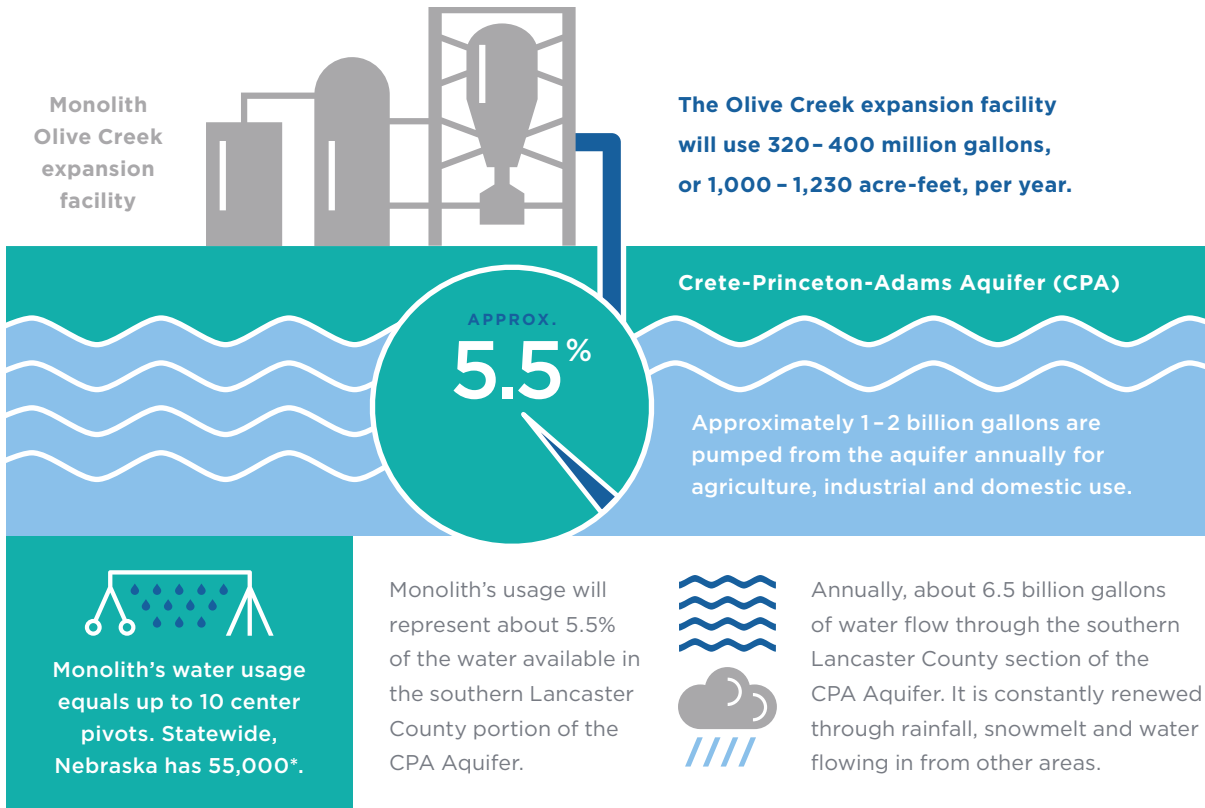


Our Water Story

At Monolith, sustainability isn't just about the products we make; it also drives how we manufacture them. We built our company to create environmental transformation through innovative solutions, manufacturing cleanly made carbon black, anhydrous ammonia and hydrogen. That's where our water story begins - using modeling, engineering and technology to reduce water usage by 40% compared to the traditional manufacturing processes for these vital products. In addition, Monolith has gone to great lengths to ensure operations will not negatively impact our state's vital water resources. We commissioned Olsson to conduct a 50-year hydrogeologic analysis of the potential groundwater impact resulting from our proposed Olive Creek expansion.

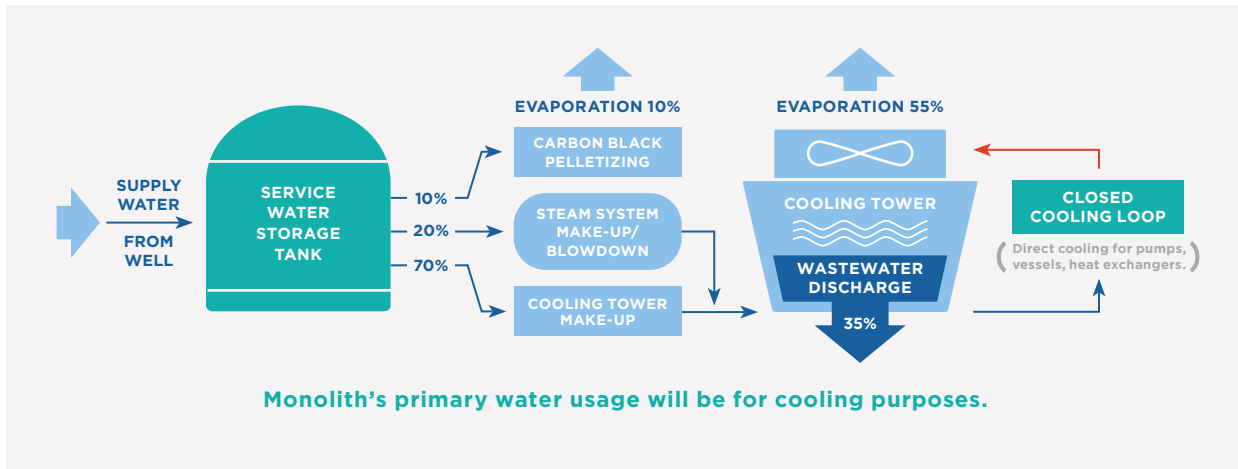


Ground Water Usage – Minimal Impact



*Source: Nebraska Irrigation Fact Sheet, Department of Agricultural Economics, Sept. 2011, Report No. 190

Water Usage



Not all stages of cooling water flow shown here. This illustration highlights some key stages.

Clean Discharge Water

Discharge water will flow at a safe rate from the plant to a tributary of the Spring Branch Creek to Salt Creek.



Salt Creek's average flow rate is 140 cubic feet per second (CFS)

At a flow rate of 0.8 CFS, Monolith's discharge represents about 0.57% of the total flow through Salt Creek

Monolith's discharge water will not touch its products.

Permitting/Regulating Authorities

Monolith is subject to the following regulatory and permitting authorities for both its water usage and discharge:

